



Community Calendar
Clovis/Curry County
New Mexico

August 7 - 13, 2011

Sunday	Monday	Tuesday	Wednesday	Thursday	Friday	Saturday
7	8	9	10	11	12	13
		Right Start @ Cannon Air Force Base Water Policy Advisory Board 9:00 am @ City Hall Cultural/Ethnic Affairs Committee 12:00 pm @ Clovis Community College Pre-Venture Seminar 6:00 pm - 8:00 pm @ Clovis Community College-Conference Rm 151	Planning & Zoning 3:00 pm @ City Hall	Old Timer Days @ Melrose NM State Agricultural Science Center Annual Field Day 8:00 am @ Agricultural Science Center Ground Breaking for Ute Pipeline Project 11:00 am Chamber Business After Hours 5:00 pm @ Coldwell Banker Colonial Real Estate	Cannon Appreciation Day @ Unity Park at Cannon Air Force Base Old Timer Days @ Melrose	Old Timer Days @ Melrose Shattering the Silence Event 2:00 pm @ Curry County Events Center

- Legend:
- Chamber Member Event
 - Community Event
 - City of Clovis
 - Curry County
 - Clovis Civic Center
 - Curry County Events Center/Fairgrounds
 - Clovis Community College
 - Small Business Development Center (SBDC)/PTAP

Clovis/Curry County Chamber Monthly Membership
BUSINESS AFTER HOURS



Hosted by:
**Coldwell Banker Colonial
Real Estate
4201 N. Prince St.**

Thursday, August 11 at 5 p.m.

Save the Date!!

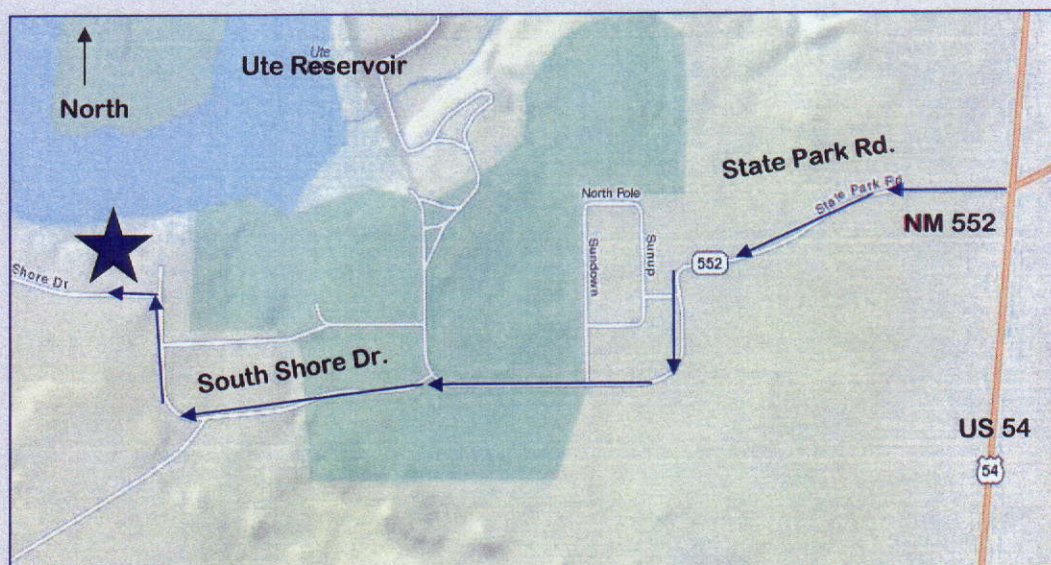
Eastern New Mexico Rural Water System Phase 1 Groundbreaking

When: Thursday, August 11, 2011

11:30 am - 12:30 pm

Where: Ute Reservoir, Logan, NM

Refreshments will be provided. Closed-toe comfortable shoes are encouraged. Site is located approximately 2 1/4 miles west of US 54.





Agricultural Science Center
at Clovis

For a more detailed program see
our Web site:
<http://clovissc.nmsu.edu>

Annual Field Day



Where:
Agricultural Science Center
13 miles north of Clovis on Hwy 288

Thursday, August 11, 2011

- ◆ 8:00 -- Registration
- ◆ 9:00 -- Field Tour
- ◆ 11:45 -- Luncheon Program

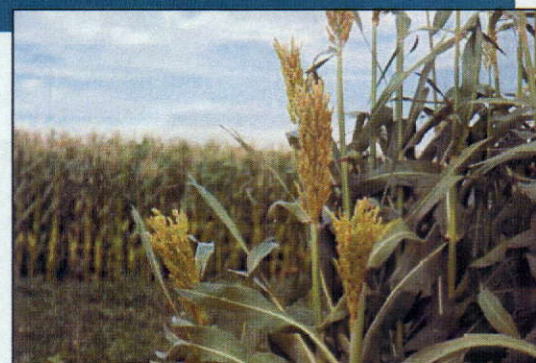
Keynote Speaker

Jeff Witte
NM Secretary of Agriculture



You will learn about...

- ◆ Herbicide Tolerant Sorghums for Grass Weed Control
- ◆ Latest Developments in the Dairy Industry
- ◆ Cereal-Legume Intercropping
- ◆ Late Planted Forage Crops
- ◆ Valencia Peanut Digging Dates
- ◆ Alfalfa Management with Limited Irrigation



Pesticide Applicator CEU's will be offered.

For additional information or directions, please call (575) 985-2292 or email clovis@nmsu.edu

Visit our Web site at <http://clovissc.nmsu.edu>